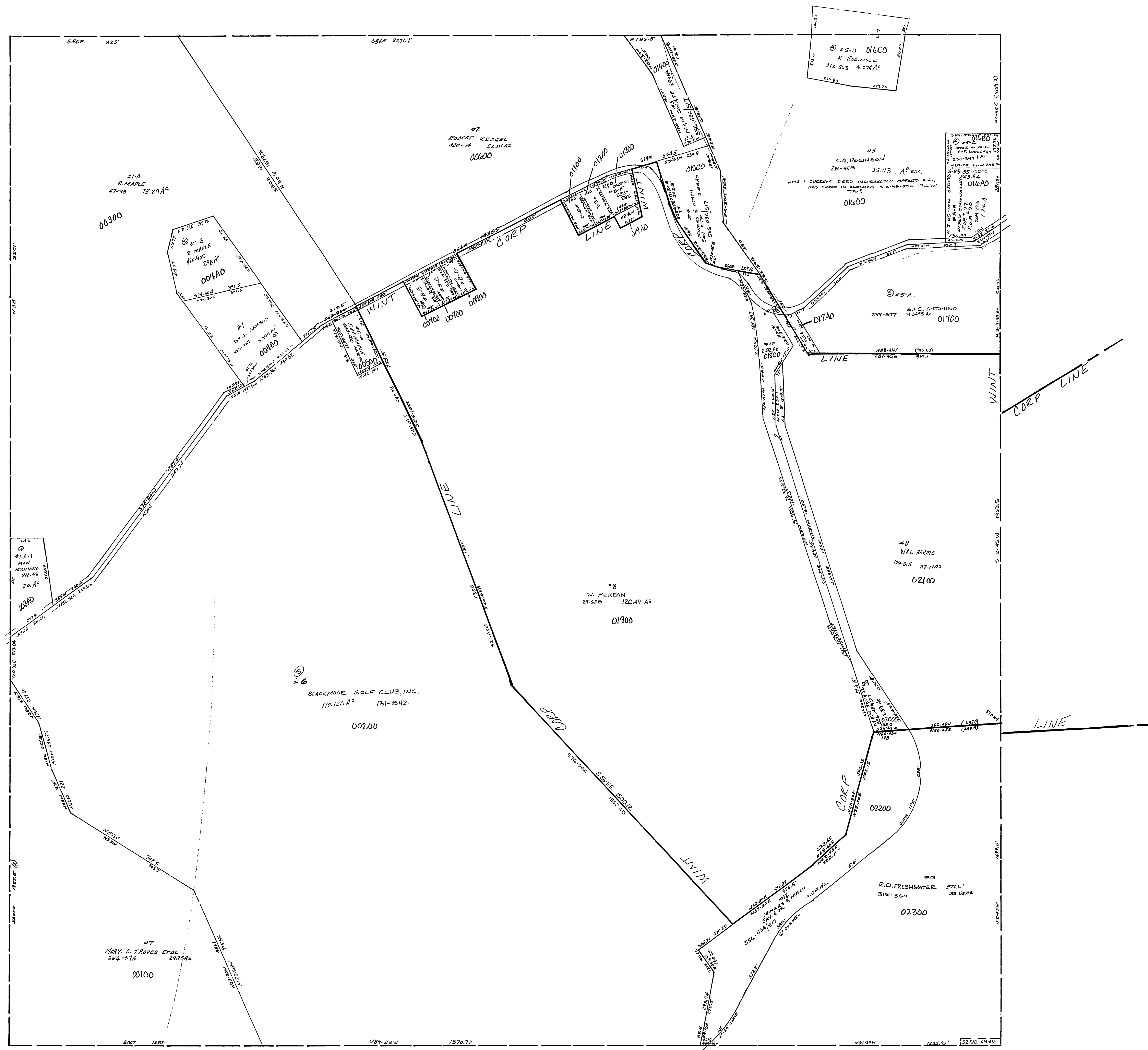


#B-D	R.L. WOODWARD	404-306	0.449 AC.
#B-E	R.L. WOODWARD	704-306	0.449 AC.
ⓐ#B-A1	R. ORSINI	575-413	0.193 A ^c
ⓐ#A-1	W.L. HARMS	145-903	0.262 A ^c
#B-B	B. BAUCH	288-212	0.449 A ^c
#B-C	"	"	0.449 A ^c
#B-C	"	"	0.449 A ^c



SECTION 31, T.7R.2.
 ISLAND CREEK TWP.
 SCALE: 1"=200'

09-3100-

